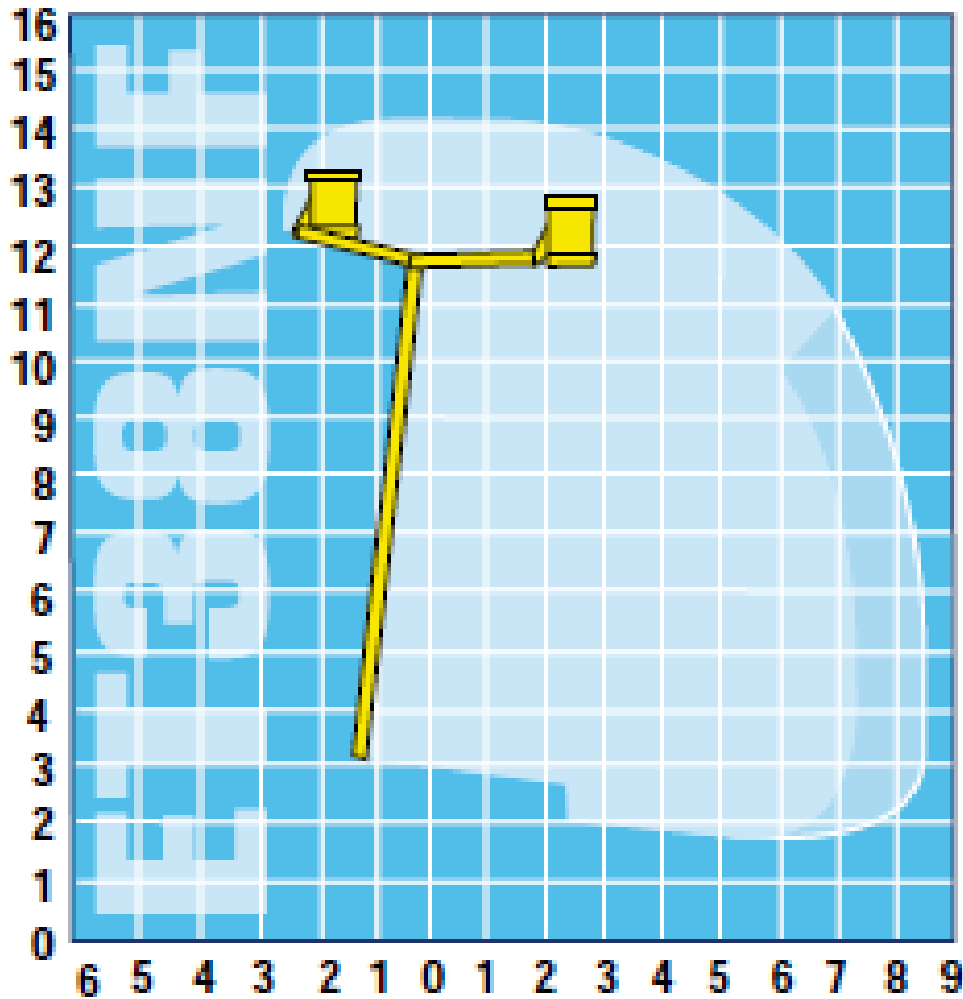


# Peter Douglass Platforms



## Specification Sheet

### Versalift ET38-NF



<b>Working Height</b>	<b>14.2m</b>
<b>Maximum Outreach</b>	<b>7.3m (200kg)—8.4m (120kg)</b>
<b>Safe Working Load</b>	<b>200kg</b>
<b>Outriggers Fully Extended</b>	<b>2.6m</b>
<b>One Sided Outriggers Option</b>	<b>N/A</b>
<b>Vehicle Height</b>	<b>3.5m</b>
<b>Vehicle Width</b>	<b>2.1m</b>
<b>Vehicle Length</b>	<b>7.4m</b>